

EQUIP. TYPE R300AURR EXP. NO.

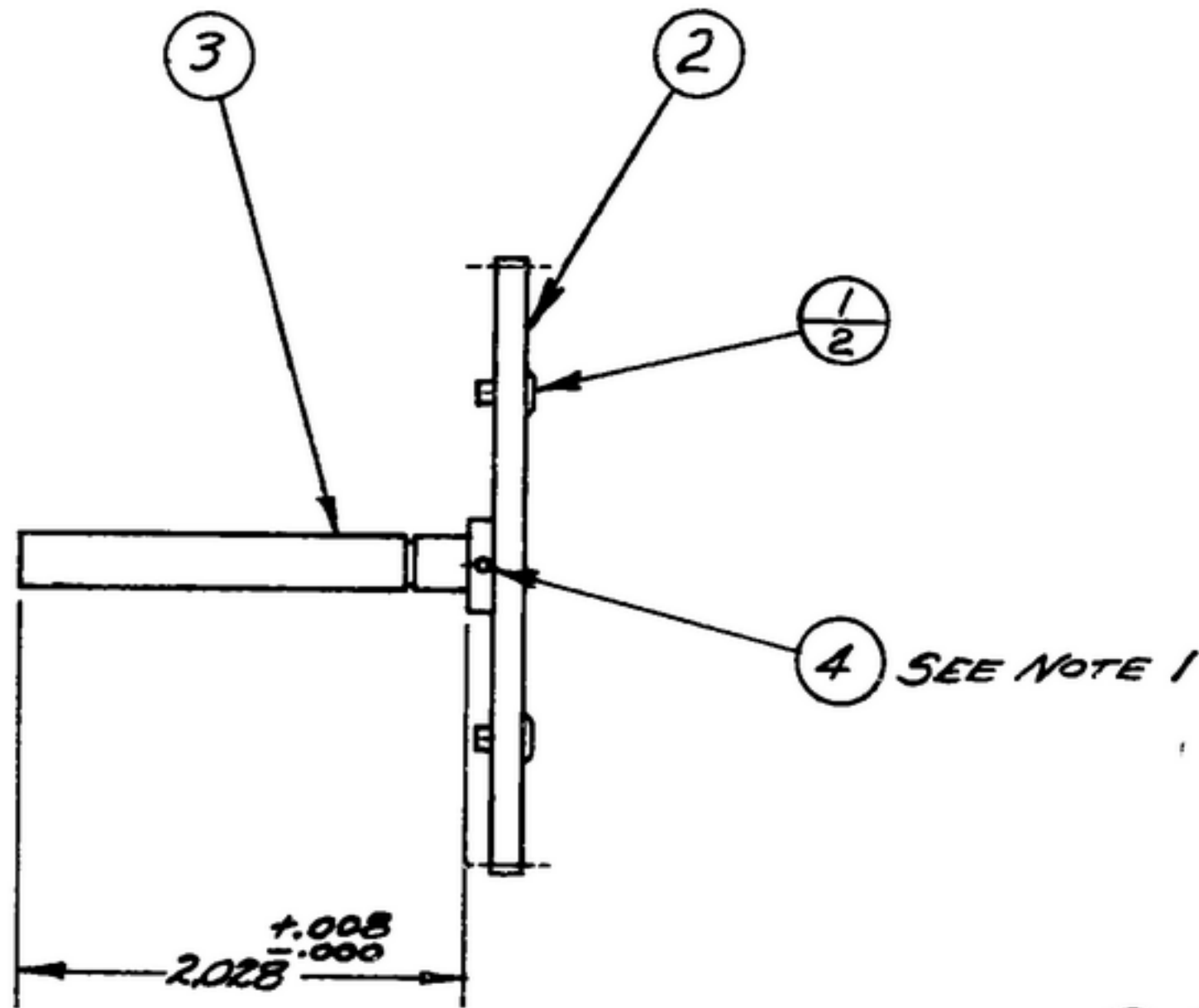
COL. 540 751 002

NOTICE: WHEN GOVERNMENT DRAWINGS, SPECIFICATIONS, OR OTHER DATA ARE USED FOR ANY PURPOSE OTHER THAN IN CONNECTION WITH A SPECIFICALLY RELATED GOVERNMENT PROCUREMENT OPERATION, THE UNITED STATES GOVERNMENT THEREBY INCURS NO RESPONSIBILITY FOR ANY OBLIGATION WHATSOEVER AND THE FACT THAT THE GOVERNMENT MAY HAVE FORMULATED, PROVIDED, OR IN ANY WAY SUPPLIED THE SAID DRAWINGS, SPECIFICATIONS, OR OTHER DATA IS NOT TO BE REGARDED BY IMPLICATION OR OTHERWISE AS IN ANY MANNER ENDORSING THE HOLDER OR ANY OTHER PERSON OR ORGANIZATION, OR SERVING AS EVIDENCE OR PERMISSION TO MANUFACTURE, USE, OR SELL ANY PATENTED INVENTION THAT MAY IN ANY WAY BE RELATED THERETO.

THIS DOCUMENT HAS BEEN PURCHASED BY THE GOVERNMENT AND MAY BE REPRODUCED AND USED IN CONNECTION WITH ANY GOVERNMENT PROCUREMENT OR MAINTENANCE OPERATION.

* FOR INFORMATION ONLY, CONTRACTOR MAY AT HIS OPTION DEVIATE FROM THESE PROCESS DETAILS.

REVISIONS			
SYM	DESCRIPTION	DATE	APPROVAL
SWE APPROVAL			
SYM PR 10042-4			
A ₁	A ₁ -MS171434 WAS SM-B-283162-3	8 OCT 59	40428-PC-59 REV'D PME
B ₁	B ₁ -MS171435 WAS MS171434	22 JULY 60	40428-PC-59 REV'D PME



NOTES:
 1. PIN GEAR (2) TO SHAFT (3), AFTER DRILLING $\frac{.062}{.065}$ DIA. HOLE, USING PIN (4).
 2. ASSEMBLE PIN (1) & GEAR (2) & SECURE BY ROLLING.
 3. PRESS GEAR (2) ON SHAFT (3).
 4. IN ALL SPLIT BALLOONS, TOP FIGURE IS MATERIAL LIST ITEM INDICATOR & BOTTOM FIGURE IS QUANTITY.

COLLINS PART NO.	ITEM	QTY	RECD	PART NO.	DESCRIPTION	MATL	MATL SPEC	NOTES
559 0248 002	4	1		MS171435	ROLL PIN			
558 0267 002	3	1		SM-B-248918	SHAFT - CLUTCH			1
558 0262 002	2	1		SM-C-248913	GEAR - CLUTCH			2
558 0255 002	1	2		SM-B-248906	PIN - CLUTCH			

LIST OF MATERIAL COLLINS PART NO. 558-0299-002

DRAWN <i>Harmer</i>		CHECKED <i>Rlan</i>		APPROVED		COLLINS PART NO. 14214-PH-51-93		DEPARTMENT OF THE ARMY SIGNAL CORPS ENGINEERING LABORATORIES FORT MONMOUTH NEW JERSEY		
UNLESS OTHERWISE SPECIFIED: DECIMAL DIMENSIONS INCLUDING HOLE SIZES MAY VARY ±.008 FRACTIONAL DIMENSIONS INCLUDING HOLE SIZES MAY VARY ±1/64 MACHINED ANGLES MAY VARY ±1° SHEARED ANGLES MAY VARY ±.25° BROKEN ANGLES MAY VARY ±1° ECCENTRICITY BETWEEN ANY DIAMETERS ON THE SAME CENTERLINE SHALL NOT EXCEED .010 TOTAL INDICATOR READING. ALL DIMENSIONS ARE FINISH DIMENSIONS INCLUDING APPLIED FINISH AND ARE GIVEN IN INCHES.						SIGNAL CORPS				GEAR ASSY - CLUTCH
558-0316-003		SM-C-248967		SC-DL-248775		REVIEWED <i>PME</i>				
COLLINS NO.		COPY		NEXT ASSY		APPROVED <i>HLY</i> <i>PME</i>				
APPLICATION				DATE 5 DEC 55		SCALE 1/1		SM-B-248950		